

CITY OF ST. CLAIR RESEARCH & DEVELOPMENT PARK



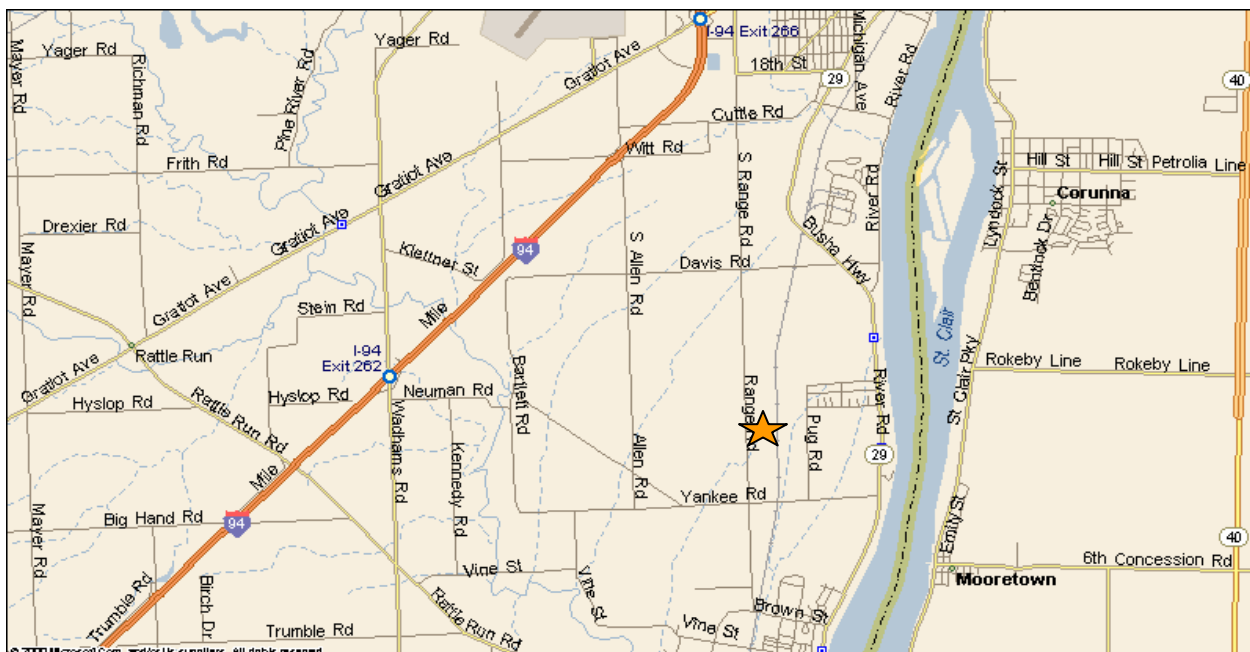
City of St. Clair Industrial Park

Possible FREE LAND available based on investment and job creation.

The City of St. Clair Industrial Park adjoins the Christian B. Haas Industrial Park in St. Clair, Michigan. The park is located within easy access to Interstate 94 and the Metropolitan Detroit area. This park is planned to attract high quality light industrial users with deed restrictions and landscaping requirements. Lots ranging from 2.5 to 105 acres offer rail access, utilities in place and are aggressively priced to attract development. Companies that are located in the area include ZF Group, Flint Hills, Dana Corp., Engineered Plastics Components and International Automotive Components.

Directions:

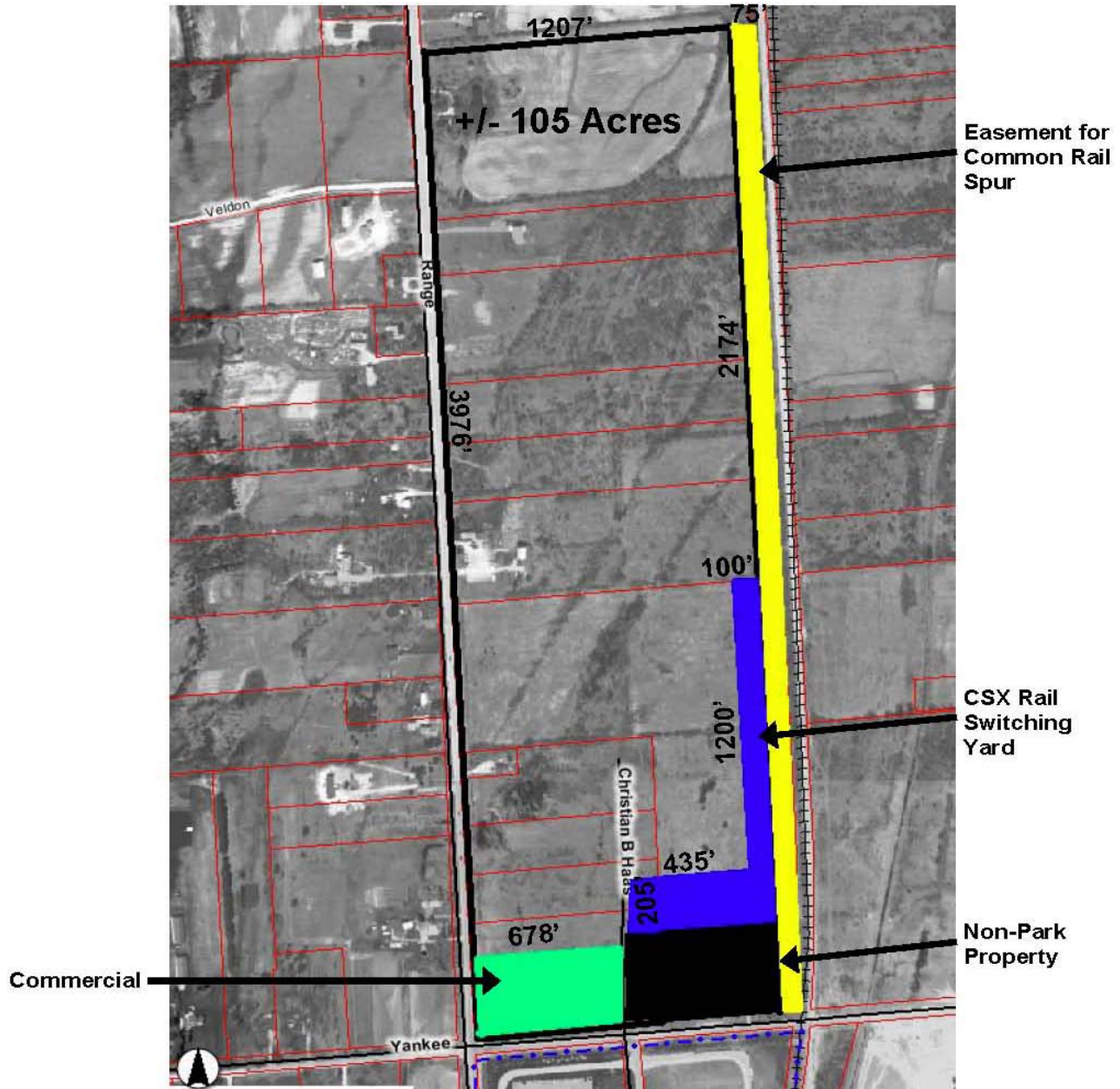
Exit Interstate 94 at Gratiot Road, Marysville (Exit #266) and proceed East. At traffic light, Range Road, turn right and continue South about 4 miles. The City of St. Clair Industrial Park is situated on the East side of Range Road between Yankee and Davis Roads.



CITY OF ST. CLAIR RESEARCH & DEVELOPMENT PARK



City of St. Clair Light Industrial Park St. Clair County, Michigan



Prepared by the
Economic Development Alliance of St. Clair County
735 Erie Street, Suite 250, Port Huron, Michigan 48060
(810) 982-9511 * www.edascc.com